

41-24

A PLANNED UNIT DEVELOPMENT

THE TENNIS CLUB OF PALM BEACH, PLAT No. 4

IN SECTION 24, TOWNSHIP 43 SOUTH, RANGE 42 EAST, PALM BEACH COUNTY, FLORIDA

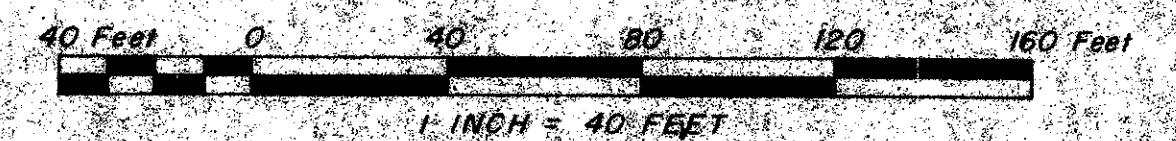
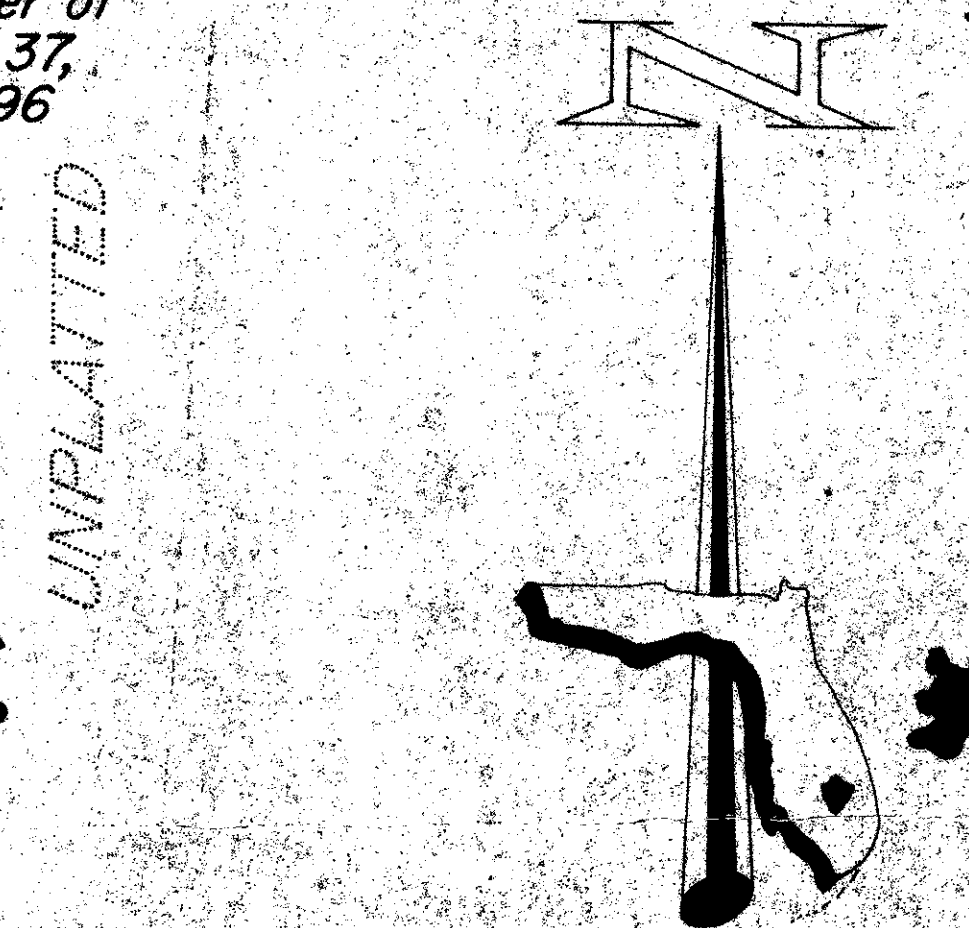
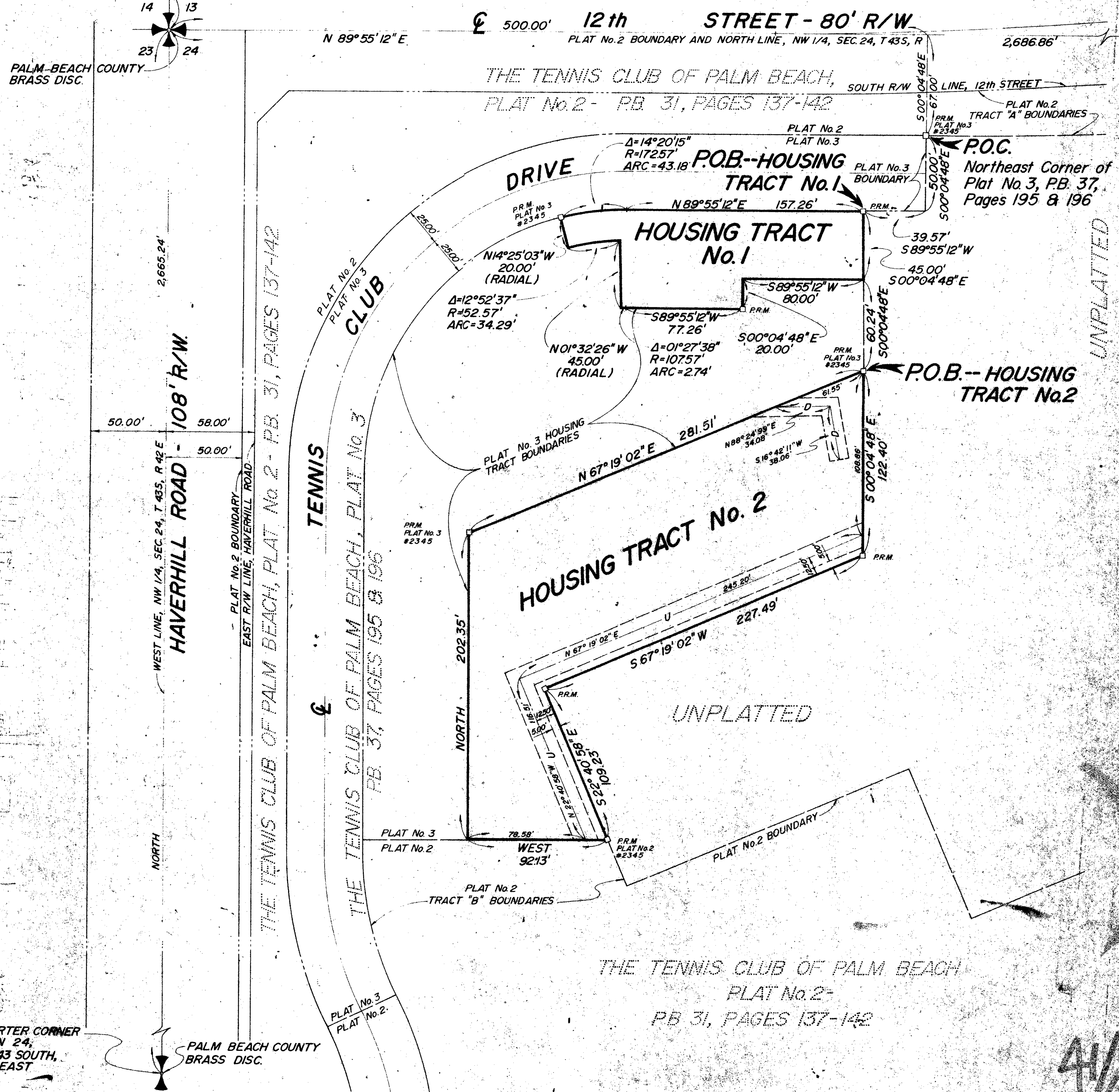
64

NORTHWEST CORNER OF SECTION 24, TOWNSHIP 43 SOUTH, RANGE 42 EAST

PALM-BEACH COUNTY BRASS DISC.

PALM BEACH COUNTY BRASS DISC.

NORTH QUARTER CORNER OF SECTION 24, TOWNSHIP 43 SOUTH, RANGE 42 EAST



GRAPHIC SCALE

BEARING DATUM

ALL BEARINGS SHOWN HEREON ARE RELATIVE TO AN ASSUMED NORTH ALONG THE WEST LINE OF THE NORTH WEST QUARTER OF SECTION 24, TOWNSHIP 43 SOUTH, RANGE 42 EAST.

NOTES

1. NO BUILDINGS OR ANY KIND OF STRUCTURES SHALL BE PLACED WITHIN EASEMENTS.
2. DRAINAGE EASEMENTS TAKE PRECEDENCE OVER UTILITY EASEMENTS.
3. MAINTENANCE ACCESS RIGHTS ARE GRANTED OVER ALL TRACTS SHOWN HEREON FOR THE PURPOSE OF MAINTENANCE OF UTILITIES AND DRAINAGE.

LEGEND

- 12" DRAINAGE EASEMENT
- 12" SANITARY SEWER EASEMENT
- 12" WATER EASEMENT
- 15' UTILITY EASEMENT
- PERMANENT REFERENCE MONUMENT
- PERMANENT CONTROL POINT

EAST QUARTER CORNER OF SECTION 24, TOWNSHIP 43 SOUTH, RANGE 42 EAST

PALM BEACH COUNTY BRASS DISC.

THE TENNIS CLUB OF PALM BEACH
PLAT No. 2 -
PB 31, PAGES 137-142

0317-300

FLORIDA SURVEYING & MAPPING, INC.
REGISTERED LAND SURVEYORS
WEST PALM BEACH, FLORIDA 33406

SCALE	1" = 40'
DATE	March 1990
DR	M.M. LEON
BY	
DATE	

THE TENNIS CLUB OF PALM BEACH, PLAT No. 4

41/64